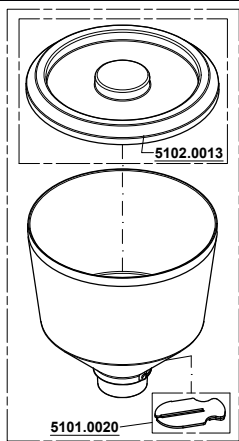


ZENITH CLUB 60 M

220V - 60Hz
230/240V - 50Hz
110V - 60Hz



09/03/2022



5211.0000

2570.0003

2512.0005

MAC60 CP

E80

2570.0004ANBKIT

E53

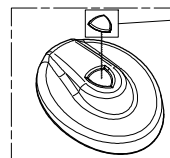
2130.0030

E25-55x55v2001-NR

2560.0006

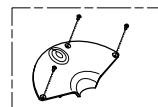
1011.0013

2501.0005

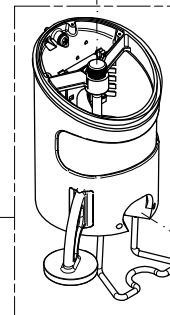


E25v2001/P

2134.0000

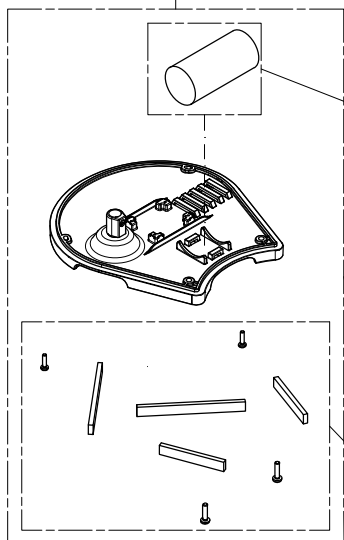


2130.0014KIT



LEVA DESTRA:
2137.1000M ROTAX ZENITH VERNIC.
2164.1000M VERNIC NO CONTACOLPI
2172.1000M ROTAX + FORC LA SPAZ.
LEVA SINISTRA:
2142.1000M ROTAX ZENITH CLUB

2130.0025



(220/230/240V) (8uF) 1013.0008
(110V) (12.5uF) 1013.1250

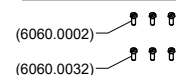
2570.0008KIT220
2570.0008KIT110

2570.0009KIT

KIT MONTAGGIO FASTENING KIT

2560.0300KIT

FISSAGGIO MACINE
BURRS FASTENING SCREWS

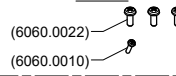


(6060.0002)

(6060.0032)

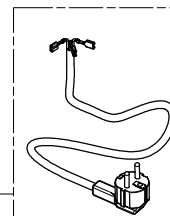
2560.0400KIT

FISSAGGIO PORTAMACINE
UPPER BURRS HOLDER FASTENING
SCREWS



(6060.0022)

(6060.0010)



1005.0240F5A G.B.-U.K.
1005.1250 COREA-KOREA
1005.0220 SCHUKO 2mt.
1005.4220 SVIZZERA-SWITZERLAND
1005.1240 AUSTRALIA
1005.0110 USA

N.B. : DOVE INDICATO CON "XXX" SI RICHIEDE DI SPECIFICARE IL COLORE
PLEASE NOTE : WHERE "XXX" IS INDICATED YOU HAVE TO SPECIFY THE COLOUR